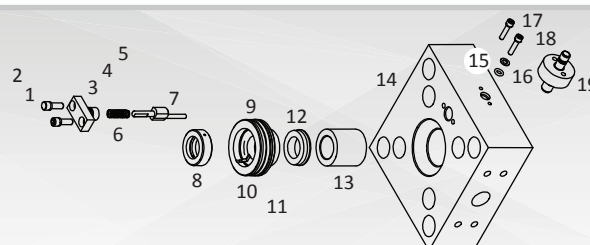
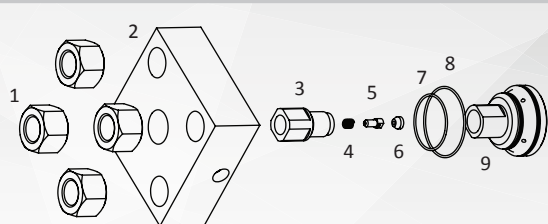
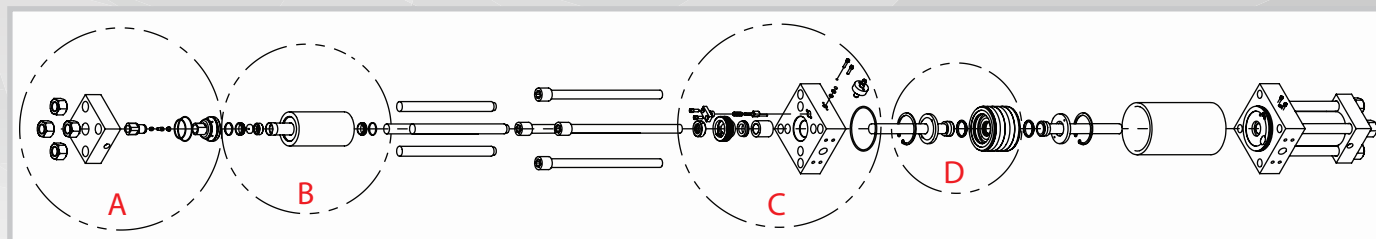
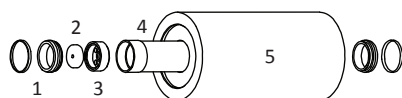


Pièces détachées ACCUSTREAM POMPES

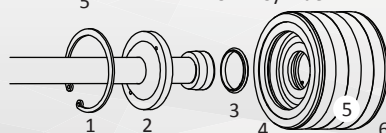
Composants pompe



| A | Référence | N° | Description |
|---|---------------|----|-----------------------------|
| | RSAC11672 | 1 | 1" - 14 Grade 8 Nut |
| | RSAC11529 | 2 | AS HP Endcap |
| | RSAC11530 | 3 | Output Adapter, Check Valve |
| | RSAC11126 | 4 | HP Poppet Spring |
| | RSAC11014 | 5 | HP Poppet |
| | RSAC11015 | 6 | HP Seat |
| | RSAC11679-031 | 7 | O-Ring |
| | RSAC11679-035 | 8 | O-Ring |
| | RSAC11523 | 9 | AS Check Valve Body |



| B | Référence | N° | Description |
|---|-----------|----|------------------|
| | RSAC11451 | 1 | HP Seal Kit |
| | RSAC11526 | 2 | AS LP Poppet |
| | RSAC11520 | 3 | LP Poppet Basket |
| | RSAC11521 | 4 | Spacer Tube |
| | RSAC11522 | 5 | AS HP Cylinder |



| D | Référence | N° | Description |
|---|-----------|----|----------------------------------|
| | RSAC11310 | 1 | AS Piston Plunger Retaining Ring |
| | RSAC11593 | 2 | Plunger Retainer |
| | RSAC11675 | 3 | T-Seal |

| C | Référence | N° | Description |
|---|---------------|----|-------------------------------|
| | RSAC13663 | 1 | GR 8 SHCS 1/4"-28 x 3/4" |
| | RSAC13665 | 2 | High Collar Lock Washer 1/4" |
| | RSAC11519 | 3 | Indicator Pin Cap |
| | RSAC11679-013 | 4 | O-Ring |
| | RSAC11680-013 | 5 | Backup Ring |
| | RSAC11669 | 6 | Indicator Spring |
| | RSAC11518 | 7 | Indicator Pin |
| | RSAC11610 | 8 | Dynamic Seal Backup |
| | RSAC11609 | 9 | Seal Housing |
| | RSAC11679-035 | 10 | O-Ring |
| | RSAC11680-035 | 11 | Backup Ring |
| | RSAC11090 | 12 | Rod Seal |
| | RSAC11608 | 13 | AS Plunger Bearing |
| | RSAC11506 | 14 | Hydraulic Endcap, Righthand |
| | RSAC11797 | 15 | O-Ring |
| | RSAL11798 | 16 | O-Ring |
| | RSAC13663 | 17 | GR 8 SHCS 1/4"-28 x 3/4" |
| | RSAC13665 | 18 | High Collar Lock Washer 1/4" |
| | RSAC11670 | 19 | Flange Mount Proximity Switch |

| | Référence | N° | Description |
|--|-----------|----|--------------|
| | RSAC11508 | 4 | Piston, 4.5" |
| | RSAC11674 | 5 | Wear Ring |
| | RSAC11673 | 6 | Piston Seal |